

GM.A | Bent tubular handles

Aluminium and stainless steel



- 1
- 2
- 3
- 4
- 5
- 6
- 7
- 8
- 9
- 10
- 11
- 12
- 13
- 14
- 15
- 16
- 17
- 18

HANDLE SHANKS

Aluminium, epoxy resin coating, RAL 9005 black colour, matte finish. Threaded blind holes.

END CAPS

Fine ground AISI 304 stainless steel.

STANDARD EXECUTION

Fine ground AISI 304 stainless steel tube, thickness 1.5 mm.

DESIGN

The slightly bent shape of the tube provides GM.A handles a modern and refined design.



GN 665 | Arch-shaped handles

Zinc alloy and aluminium



HANDLE SHANKS

Die-cast zinc alloy, RAL 9006 grey colour.

Zinc-plated steel screws and washers included in the supply. Two pins between the handle shanks and the oval cross section bar offer a secure assembly and a fine positioning.

STANDARD EXECUTION

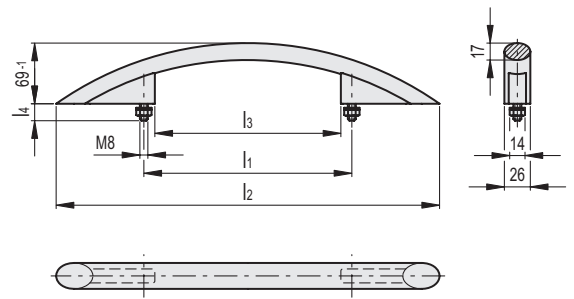
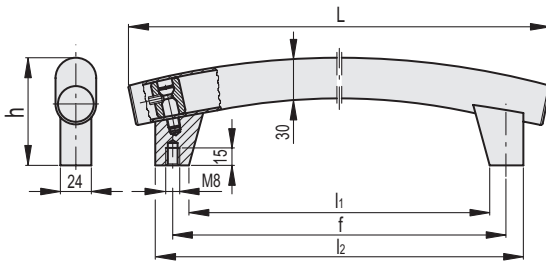
Aluminium. Oval cross section bar, epoxy resin coating, RAL 9005 black colour, matte finish.

SPECIAL EXECUTIONS ON REQUEST

- Different lengths.
- Surfaces with different finishes.
- Epoxy resin coating, RAL 9006 light-grey colour, matte finish (GN 665-SR).



Conversion Table			
1 mm = 0.039 inch			
L		l2	
mm	inch	mm	inch
600	23.62	526	20.71
700	27.56	632	24.88



Code	Description	f	L	h	l1	l2	Δ
RHGM-30.A500.33	GM-30.A500.33	500	600	90	460	540	1050
RHGM-30.A600.33	GM-30.A600.33	600	700	100	560	640	1120

Code	Description	l1	l2	l3	l4	Δ
GN.27471	GN 665-26-350-SW	350±0.25	526	328	17	621
GN.27475	GN 665-26-450-SW	450±0.25	632	428	20	699

Lift & Pull handles